



Model "WMG" Watertight Gear Reduced Hoist Operator

PowerMaster Model "WMG" operators are designed for use on Sectional Doors with High Lift or Vertical Lift and Rolling Service Doors and Grilles in damp or wet environments.

STANDARD 2 YEAR WARRANTY.



**Architectural
Specifications:**



Access Alliance Photo Beams

Economical
Protect Openings Up to 18' Wide
Auto-Detected & Monitored by
PowerMaster Solid State Circuit



PowerMaster Modular Receiver

Easy Installation –
Plugs into Control Board
Standard Three Channel - Open/Close/Stop
Single Button Control Available
FC Antenna

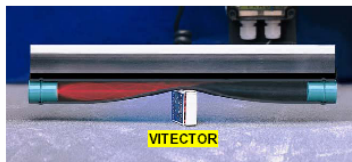


Complete Selection of Commercial
Transmitters Available



OSE OPTICAL SENSING EDGE

Auto-Detected & Monitored by
PowerMaster Solid State Circuit
Functions when astragal
is bent or has slight damage
Sized to Door in the field
Quick Installation
Infrared Technology



All types of Access Controls
available. Call for pricing.

Supply PowerMaster model "WMG" Watertight Industrial Duty Hoist type operator rated _____ HP, _____ VOLTS, _____ PHASE, for use on Sectional Doors with High Lift or Vertical Lift and Rolling Service Doors and Grilles in a wet environment.

Primary speed reduction shall be by means of an industrial gear box with bronze worm gear in an oil bath. Motor shall be of the high starting torque, continuous duty industrial type, protected from overload by a current sensing or thermal type overload device. Motor controller shall be a heavy duty, full voltage, across the line, magnetic reversing contactor, that is mechanically and electrically interlocked. Electrical components shall be installed in a NEMA 4 enclosure integral to the operator. A transformer shall be provided to reduce control voltage to 24 VAC. Separate terminal strips shall be provided for connection of power supply line and all control devices. Operator shall be wired for an open/close/stop control station.

Control circuit shall provide instant reverse motor wiring on 1Ø operators. Positive chain driven, rotary type limit switches shall be provided to limit full open and close travel of door. Limit switch adjustment shall not be affected by removal of motor or by manual operation of door. A floor level manual hoist chain shall be provided for emergency operation of door. An electrical interlock switch shall be provided to disable control circuit while manual hoist chain is engaged. Final drive chain shall be a #50 or larger roller chain. Operator shall be capable of right or left hand mounting in either a vertical or horizontal position.

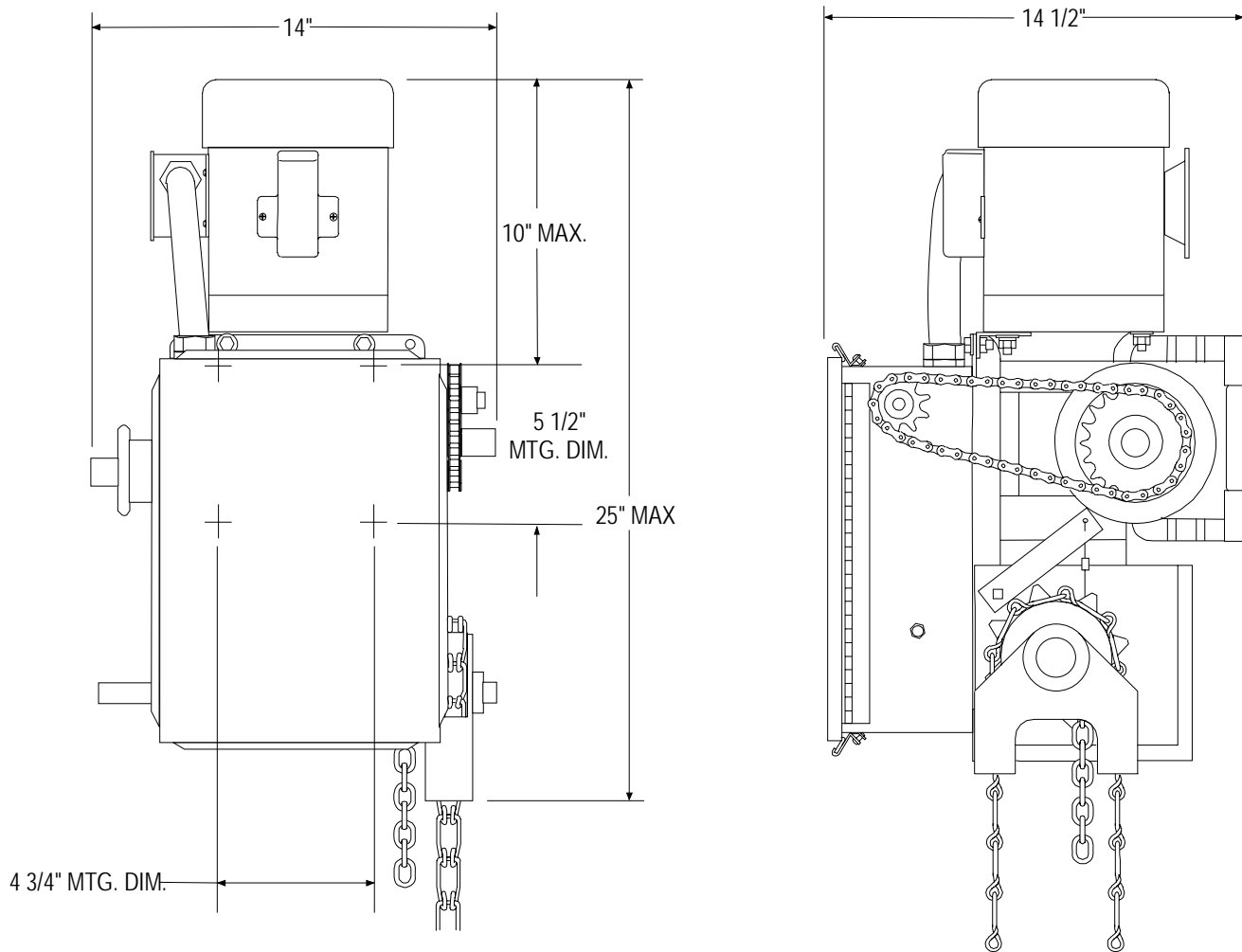
PowerMaster Garage Door Openers
Proudly Assembled in the USA

Electrical Specifications:

- High Starting Torque TEFC Motor with Full Overload Protection
- Solid State Circuitry with Power and Program Feedback LED's
- On Board Open/Close/Stop buttons for service and adjustments
- Terminals labeled and grouped by function
- Auto-Detect monitored photo beam for simplified installation
- Selectable Operating modes B2, C2, D1, E2, T, TS
- Field adjustable built in functions including: timer to close, mid-stop, delay on reverse, lock bar sensing, maximum run time, etc.

Mechanical Specifications:

- For Use in Watertight Applications on Sectional Doors and Rolling Service Doors and Grilles
- Mechanically Self Locking Gear Reducer (Oil Bath Type)
- Heavy Duty Corrosion Resistant #50 Roller Chain and drive sprocket Included
- Adjustable Torque Limiting Clutch
- Floor Level Disconnect w/Chain Hoist Assembly & Electrical Interlock (For Manual Operation)
- Baked on Grey Powder Coat finish



**AUTHORIZED
DISTRIBUTOR:**