



Model "GJ" Gear Reduced Jackshaft Operator

PowerMaster Model "GJ" operators are designed for use on Rolling Service Doors, Rolling Grilles, and Counter Shutters.

STANDARD 2 YEAR WARRANTY



**Architectural
Specifications:**



Access Alliance Photo Beams

Economical
Protect Openings Up to 18' Wide
Auto-Detected & Monitored by
PowerMaster Solid State Circuit



PowerMaster Modular Receiver

Easy Installation –
Plugs into Control Board
Standard Three Channel - Open/Close/Stop
Single Button Control Available
FC Antenna

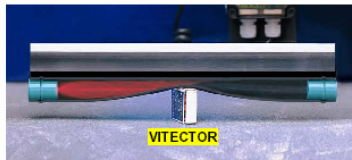


Complete Selection of Commercial
Transmitters Available



OSE OPTICAL SENSING EDGE

Auto-Detected & Monitored by
PowerMaster Solid State Circuit
Functions when astragal
is bent or has slight damage
Sized to Door in the field
Quick Installation
Infrared Technology



Supply PowerMaster model "GJ" Industrial Duty Gear Reduced Jackshaft type operator rated _____HP, _____VOLTS, _____PHASE, for use on Rolling Service Doors, Rolling Grilles, and Counter Shutters.

Primary speed reduction shall be by means of an industrial gear box with bronze worm gear in an oil bath. Motor shall be of the high starting torque, continuous duty industrial type, protected from overload by a current sensing or thermal type overload device. Motor controller shall be a heavy duty, full voltage, across the line, magnetic reversing contactor, that is mechanically and electrically interlocked. Electrical components shall be installed in a NEMA 1 enclosure integral to the operator. A transformer shall be provided to reduce control voltage to 24 VAC. Separate terminal strips shall be provided for connection of power supply line and all control devices. Operator shall be wired for an open/close/stop control station.

Control circuit shall provide instant reverse motor wiring on 1Ø operators. Positive chain driven, rotary type limit switches shall be provided to limit full open and close travel of door. Limit switch adjustment shall not be affected by removal of motor or by manual operation of door.

An adjustable torque limiting clutch shall be provided to protect the operator in case an obstruction is contacted. Final drive chain shall be a #41 roller chain. Operator shall be capable of right or left hand mounting in either a vertical or horizontal position.



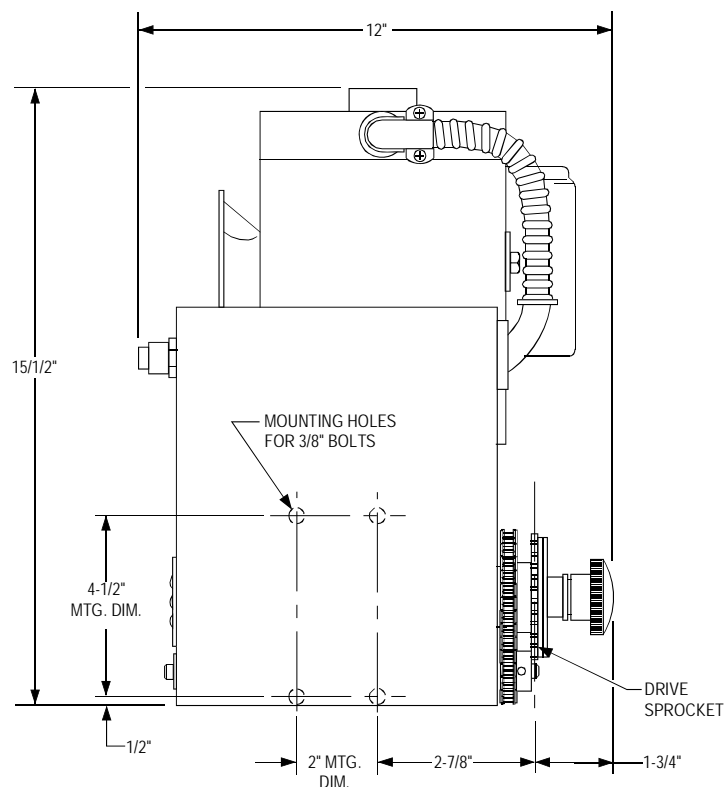
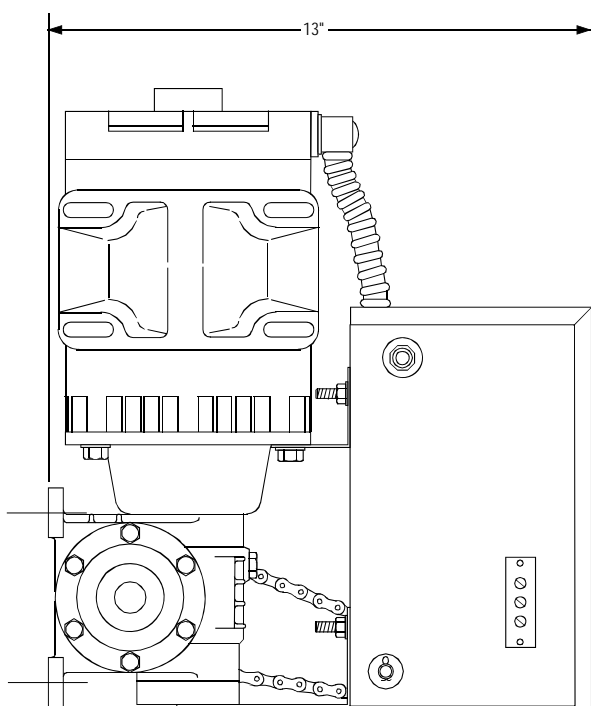
**PowerMaster Garage Door Openers
Proudly Assembled in the USA**

Electrical Specifications:

- High Starting Torque Motor w/full overload protection
- Solid State Circuitry with Power and Program Feedback LED's
- On Board Open/Close/Stop buttons for service and adjustments
- Terminals labeled and grouped by function
- Auto-Detect monitored photo beam for simplified installation
- Selectable Operating modes B2, C2, D1, E2, T, TS
- Field adjustable built in functions including: timer to close, mid-stop, delay on reverse, lock bar sensing, maximum run time, etc.

Mechanical Specifications:

- For Use on Rolling Service Doors, Rolling Grilles, and Counter Shutters.
- Heavy Duty Worm Gear Reduction
- Heavy Duty #41 Roller Chain & Driven Sprocket for Final Drive Included
- Adjustable Torque Limiting Clutch
- Positive Chain Driven Rotary Limit Switches
- Baked on Grev Powder Coat finish



**AUTHORIZED
DISTRIBUTOR:**