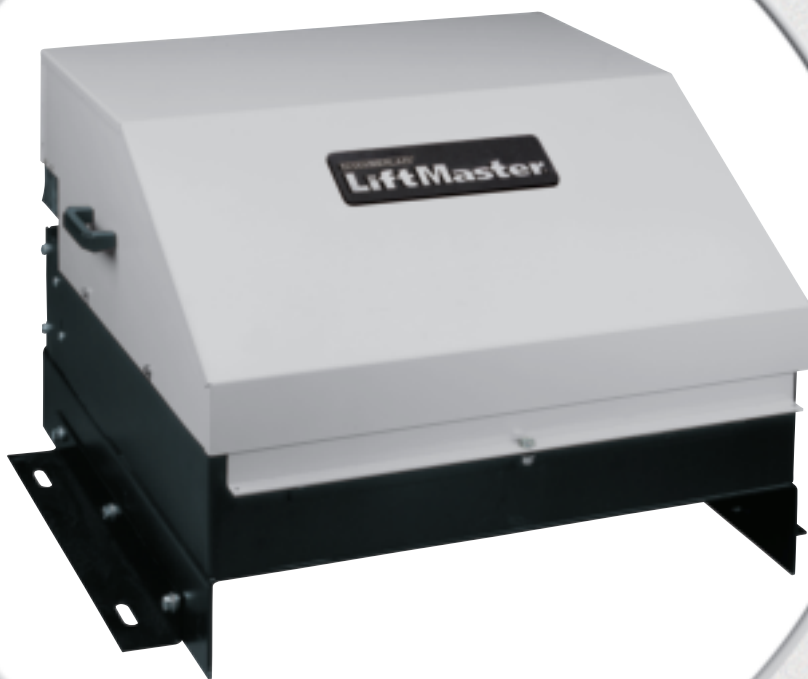


Heavy-Duty Hydraulic Slide Gate Operator

HS 670



heavy-duty operators designed for commercial or industrial applications that require high cycles and large gates

The extremely powerful design supports gate lengths up to 80 feet and gate weights up to 5,000 pounds. Powdercoated, weatherproof, lockable, 14-gauge cabinet and a high-starting continuous-duty torque motor with built-in overload protection ensure rugged and reliable performance. These models are ideal for the heaviest commercial installations and are UL325-compliant.

built-in 312HM radio receiver

Exclusive from Chamberlain®, a single remote control access solution for gates and additional access points.

the LiftMaster® gate logic (GL) board provides many enhanced and exclusive features

- Digital Logic Control Allowing for Long Control Lines of Over 1,000 Feet
- Separate Open and Close External Sensor Inputs
- Fully Adjustable Inherent Obstruction Detection System
- 17 LEDs to Ease Installation and Speed Diagnostics
- "Sequenced Access Management" (SAM) System
- Advanced Dual Gate Operation
- Industrial Surge and Spike Protection



2 year warranty

CHAMBERLAIN®

LiftMaster®
PROFESSIONAL

standard features

built-in radio receiver

Includes a factory-installed 312HM radio receiver for use with DIP switch and Security+® remote controls. This allows for one LiftMaster® remote control to conveniently open the gate and additional access points. Remote controls sold separately.

inherent obstruction sensing

This unit's internal obstruction sensing system offers a single force adjustment for both the open and closed directions. If the gate comes in contact with an obstruction, the gate will reverse to opposite limit and stop.

external obstruction sensing

Separate open and close cycle input connections are provided for external contact and non-contact sensors, such as photo-eyes and edge devices.

maglock control

A dedicated control relay is provided to activate and deactivate an optional magnetic lock for securing the gate.

warning device

UL325-compliant entrapment warning alarm has the ability to be set for pre-operation warning. This will provide a 3-second warning prior to and during gate movement.

loop detector inputs

A full range of inputs are available to support exit, shadow and interrupt loop detectors.

manual hydraulic release

Ensures that manual operation is possible during emergencies and maintenance work.

control inputs

Control inputs allow the connection of a full range of optional external devices like loop detectors, telephone entry systems, access control systems and radio receivers.

advanced dual gate operation

This convenient 2-wire system allows the operation of 2 separate gate operators in unison at a single entrance. This advanced system provides the added convenience of connecting any accessories to either operator.

timer to close

Adjustable timer can be set from 1 to 180 seconds. The unit will automatically reset upon receiving any additional open commands.

sequenced access management (SAM) system

This feature provides the capability to sequentially control the operator in tandem with a barrier gate.

digital logic control

Supports long-distance control wiring runs of over 1,000 feet, gaining you greater flexibility of gate operator site placement.

surge & spike protection

Specially designed circuitry provides excellent protection from external spikes or surges.

LED indicators

Operator input, status and diagnostic LEDs simplify setup and troubleshooting.

maximum run timer

Protects against damage to the gate and operator by limiting the unit's run time to 120 seconds.

accessory power

Includes one 24 VAC connection for operator accessories, such as a radio receiver or loop detector.

limit settings

All driven limit switches are NEMA 4, modular and fully adjustable, adding considerable convenience to unit installation and maintenance.

emergency stop button

Standard in a weather-tight outdoor enclosure, this stop button will halt movement of the operator in an emergency situation.

SPECIFICATIONS

OPERATOR SPEED

GC Models - 12 inches per second

GI Models - 18 inches per second

POWER

115/208/230 VAC - Single Phase,
208/230/460/575 - Three Phase, All 60Hz

OPERATOR WEIGHT

250 lbs.

UL LISTED

UL991

UL325:GC is listed for Class I and II; GI is listed for Class III and IV



CONSTRUCTION

Hydraulic Pump: 3 Gallons per Minute Capacity

Motor: 1 & 2 HP Continuous-Duty Motor

Metal Frame:

Enclosure: Powder-coated, Weatherproof, Lockable, 14-Gauge Pre-Galvanized Steel

Drive Rail available in 20 foot and 8 foot lengths (Not Supplied)

OPTIONAL EQUIPMENT

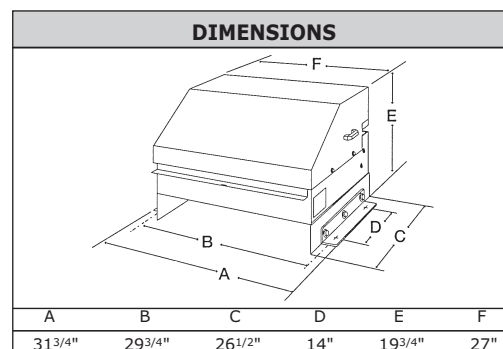
Plug-in Loop Detectors

Self-Regulating Reservoir Heater

Auxiliary Contact Blocks

Fire Release Option

Remote Antenna Mounting Kit



RECOMMENDED CAPACITIES			
HP	MAX. GATE WT. (lbs.)	MAX. GATE WIDTH (ft.)	CYCLES /HR.
1	3000	80	Continuous Duty
2	5000	80	Continuous Duty

CHAMBERLAIN®
LiftMaster®
PROFESSIONAL

THE CHAMBERLAIN GROUP, INC.
 845 Larch Avenue • Elmhurst, IL 60126
www.liftmaster.com



© 2007 LM HS 670 Spec 07/07
 The Chamberlain Group, Inc.
 Printed in U.S.A.