



Sprint 110 V - 24V

HYDRAULIC BARRIER FOR INTENSIVE USE AND FOR BEAMS UP TO 5 M / 16,4 FEET



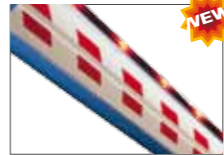
- Fast and reliable automatic hydraulic barrier. SEA TOTAL QUALITY: All main parts are manufactured and tested in the SEA plants. Longer life thanks to the operator working through oil and the inside lubrication of all the mechanical components
- Extremely silent thanks to hydraulic operating
- Adjustable mechanical stops
- Also electronic limit switches on request
- **Cataphoresis treated and polyester painted steel casing** for long time lasting
- INOX (316) steel casing available (on request) Cover for beam attachment for more security and a better design
- Oval aluminium beam with protection rubber and optional STRIP LED light
- Casing pre-drilled with holes for photocells SUNSET and key switch ASTER Equipped with control board GATE 1 DG
- Universal right / left hand side.
- **On request model VELA RAPID up to 0,9 sec opening time**
- Available also in version **SPRINT 24V DC** with possible **battery back up**



By pass valves



Easy Key release system in the case of power failure



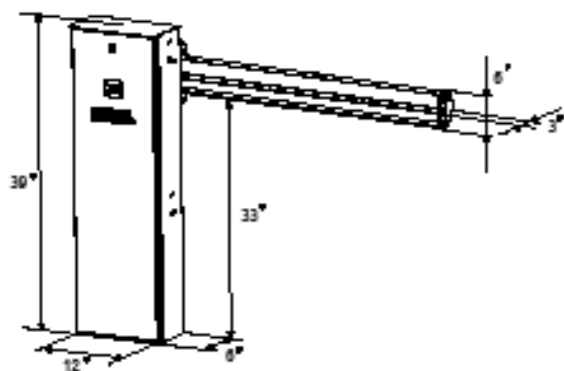
Strip red light Led - IP 67



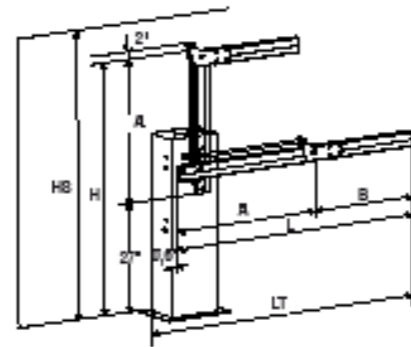
Case opening

CODE	NAME	OPENING TIME	MAX BEAM LENGTH	PUMP	FREQUENCY OF USE (%)	PCS FOR PALLET
11703080-CSA-A	SPRINT 120 V	7 sec.	16,5 feet	2 liters	75%	8
11703005-A-CSA	SPRINT 24V DC	5 sec.	16.5 feet	2 liters	90%	8

Foundation plate included



Dimensions (inches)



Articulated beam

PACKAGE SPRINT 110V

- N.1 Operator SPRINT with control board GATE 1 DG
- N.1 Installation accessories Kit
- N.1 Installation instructions and general notice
- N.1 Foundation plate
- N.1 Warning signboard

ASSEMBLED BEAMS

11903100	11903105	11903110
KIT LIGHT S 3 - TH 10 feet Oval beam + balancing spring with blunt free rubber + profile LED (Sticker not included)	KIT LIGHT S 4 - TH 13 feet Oval beam + balancing spring with blunt free rubber + profile LED (Sticker not included)	KIT LIGHT S 5 TH - 16,5 feet Oval beam + balancing spring with blunt free rubber + profile LED (Sticker not included)

ACCESSORIES

12710087	12715220 (*)	16200045	23105441	12710797	12710798
SURL Pliable support for oval beam	STICKER Red sticker for beam (164 feet package / 50 m)	CSUPLIGHT Counter plate for fork support	STRIP LED Red light IP 67 - 16.5 feet with power supply 1Ah	RAPID RELEASE 3 Beam break-away system with round beam of 10 feet-70 mm diameter	RAPID RELEASE 4 Beam break-away system with round beam of 13 feet -70 mm diameter



11902045 (*)**
LIGHTS-ART
Articulated oval beam up to max 11 feet / 3,5 m with beam and spring



10920805-I
SF
Fork support

*Same length of the beam
 ** The STRIP LED can be used only for the first part of the beam just up to the articulation
 ***LIGHT-ART On request cut up to max. 11,5 feet following the drawing
 N.B:For 13/14,5 feet beams it is recommended to install 16200100 or 12710087
 N.B:23101104 to combine with 23106305