

# SJ INSTALLATION MANUAL

**IMPORTANT:  
KEEP FOR FUTURE REFERENCE**

THE FOLLOWING INFORMATION SHOULD BE RECORDED AT TIME OF INSTALLATION:

DATE: \_\_\_\_\_

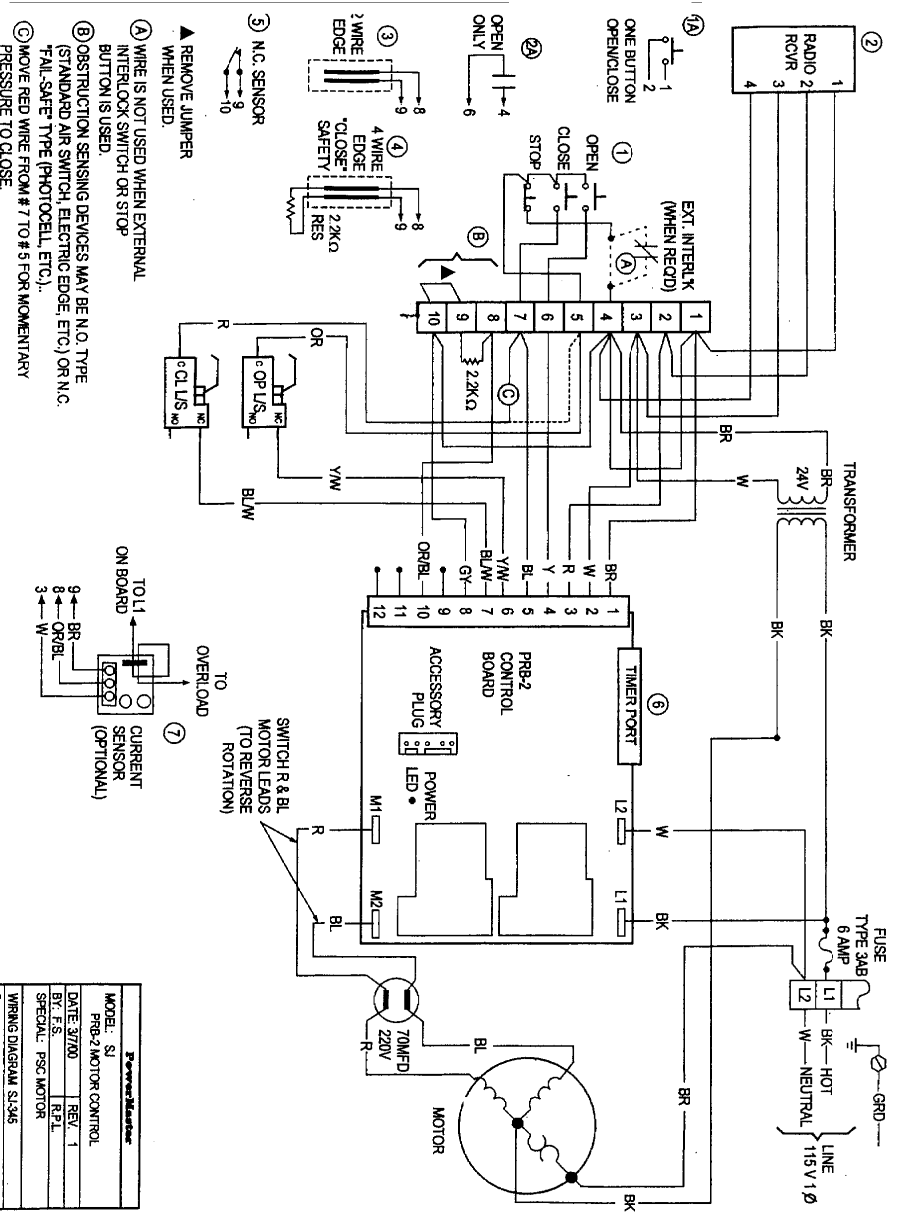
SERIAL # \_\_\_\_\_

OPERATOR MODEL: **SJ** \_\_\_\_\_

WIRING DIAGRAM # \_\_\_\_\_

THE "OPERATOR MODEL" AND "SERIAL #" ARE LOCATED ON THE ELECTRICAL ENCLOSURE COVER. WIRING DIAGRAM IS LOCATED INSIDE COVER, DIAGRAM # IS AT LOWER RIGHT-HAND CORNER.

THE ABOVE INFORMATION SHOULD BE GIVEN IN ALL CORRESPONDENCE REGARDING THIS OPERATOR TO INSURE FAST SERVICE, WHEN ORDERING PARTS OR REQUESTING INFORMATION.



<b>TRUSSARDI</b>	
MODEL: SJ	PRB-2 MOTOR CONTROL
DATE: 3/70	REV: 1
BY: F.S.	R.B.L.
SPECIAL: PSC MOTOR	
WIRING DIAGRAM S1345	
© Copyright Trussardi Inc. All Rights Reserved. No part of this document may be reproduced without written permission from Trussardi Inc.	

## SJ ELECTRIC DOOR OPERATOR

### INSTALLATION

1. Attach MOUNTING CLIP to OPERATOR with (4) 5/16" x 1-3/4" bolts, lockwashers, and nuts.
2. Install OPERATOR and Mounting Clip Assembly to Door Bracket Plate (Mounting Clip supplied by door manufacturer).
3. Install DOOR SHAFT SPROCKET and key. Align with drive sprocket of CLUTCH ASSEMBLY and tighten set screw.
4. Install DRIVE CHAIN between DOOR SHAFT SPROCKET and CLUTCH ASSEMBLY drive sprocket. Shorten CHAIN if necessary. Adjust tension as shown and tighten all bolts.

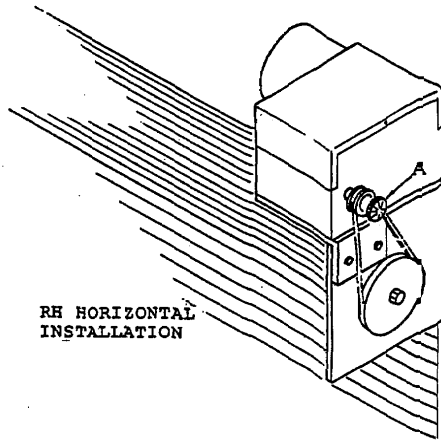
### CLUTCH ADJUSTMENT

EXERCISE EXTREME CAUTION WITH CHAINS AND OTHER MOVING PARTS

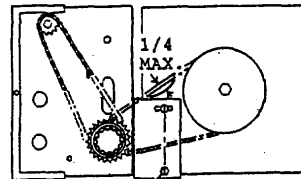
1. With door closed, tighten CLUTCH ADJUSTMENT KNOB (A) 1/4 turn after resistance is felt.
2. Open door and check adjustment. If CLUTCH slips: Stop operation and tighten knob 1/2 turn.

### MANUAL OPERATION

By loosening the adjustment knob, the CLUTCH can be disengaged for manual operation.



RH HORIZONTAL  
INSTALLATION



TIGHTEN PIVOT BOLTS  
AFTER ADJUSTMENT

RH VERTICAL  
INSTALLATION

### CONNECTING TO POWER SUPPLY

Consult local electrical codes before proceeding with permanent installation.

**WARNING:** Exercise caution when operating machine. The drive chain and limit drive chain are exposed; and, when turning, could cause injury. Wiring diagrams can be found inside electrical enclosure cover. Connect operator to properly grounded supply (green colored slotted head screw is supplied in control box), and install control stations as required.

**NOTE:** THIS UNIT MUST BE PROPERLY GROUNDED.

On three-phase units, make certain that operator rotates in correct direction. If direction is wrong, limit switches will not function, and damage will occur. It is recommended that door be moved manually to a mid-position before turning on power, so that it may be stopped before damage occurs, if rotation is incorrect. If direction is wrong, reverse any two of the three incoming power supply leads to correct rotation.

After wiring has been checked and operator is running properly, limits will probably need re-adjusting. (See: Limit Adjustment)

WHERE OPERATORS WITH WIRING TYPES WHICH UTILIZE CONSTANT PRESSURE ON THE CLOSE BUTTON ARE USED, THE CONTROL STATION MUST BE LOCATED SO THAT THE OPERATION OF THE DOOR MAY BE OBSERVED BY THE PERSON OPERATING THE DOOR.

**NOTE:** MOUNT CONTROL STATION AND WARNING LABEL WITHIN SIGHT OF DOORWAY.

