

CGH

INSTALLATION MANUAL

IMPORTANT: KEEP FOR FUTURE REFERENCE

THE FOLLOWING INFORMATION SHOULD BE RECORDED AT TIME OF INSTALLATION:

DATE: _____

SERIAL # _____

OPERATOR MODEL: _____

WIRING DIAGRAM # _____

THE "OPERATOR MODEL" AND "SERIAL #" ARE LOCATED ON THE ELECTRICAL ENCLOSURE COVER. WIRING DIAGRAM IS LOCATED INSIDE COVER, DIAGRAM # IS AT LOWER RIGHT-HAND CORNER.

THE ABOVE INFORMATION SHOULD BE GIVEN IN ALL CORRESPONDENCE REGARDING THIS OPERATOR TO INSURE FAST SERVICE WHEN ORDERING PARTS OR REQUESTING INFORMATION.

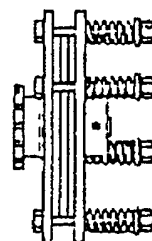
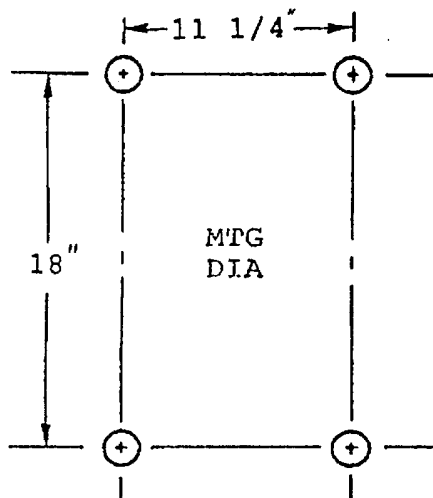
INSTALLATION

WALL MOUNTING

Step #1 - Using the center of the door drive shaft as a reference point, locate four mounting holes.

Step #2 - Operator should be mounted on wall, using 3/8" through bolts for a secure mounting. If wall is of such construction as to prohibit the use of through bolts, bolts and shields of sufficient size may be used.

Step #3 - Install coupling.



CLUTCH

CLUTCH ADJUSTMENT - The clutch is set to its lightest adjustment by the manufacturer. To tighten the clutch, turn all four of the clutch adjusting nuts clockwise 1/4 turn each. Retry the operator. Repeat the adjustment and electrical running operations as necessary until the operator can fully open and fully close the door with no clutch slippage during travel. This procedure will provide the lightest required setting of the clutch to permit the most safety without an obstacle sensing device.

MANUAL OPERATION

TO ENGAGE MANUAL OPERATING CHAIN:

1. Pull down and hold the disconnect chain.
2. While holding the disconnect chain, move manual operating chain to assure complete engagement of manual drive gears.
3. Lock disconnect chain in place, utilizing locking device.
4. Interlock switch in operator cuts off power to motor, when manual chain is engaged.
5. Release of disconnect chain will re-engage operator for electrical operation.

LUBRICATION

All bearings throughout the CGH operator are oil impregnated, or sealed, lubricated for life, anti-friction bearings. The motor is factory lubricated, and requires no additional lubrication. A few drops of oil should be applied periodically to the moving parts of the disconnect device.

CONNECTING TO POWER SUPPLY

Consult local electrical codes before proceeding with permanent installation.

WARNING: Exercise caution when operating machine. The drive chain and limit drive chain are exposed, and when turning, could cause injury. Wiring diagrams will be found inside electrical enclosure cover. Connect operator to properly grounded supply (green colored slotted head screw is supplied in control box), and install control stations as required.

NOTE: THIS UNIT MUST BE PROPERLY GROUNDED.

On three-phase units make certain that operator rotates in correct direction. If direction is wrong, limit switches will not function, and damage will occur. It is recommended that door be moved manually to a mid-position before turning on power, so that it may be stopped before damage occurs, if rotation is incorrect. If direction is wrong, reverse any two of the three incoming power supply leads to correct rotation.

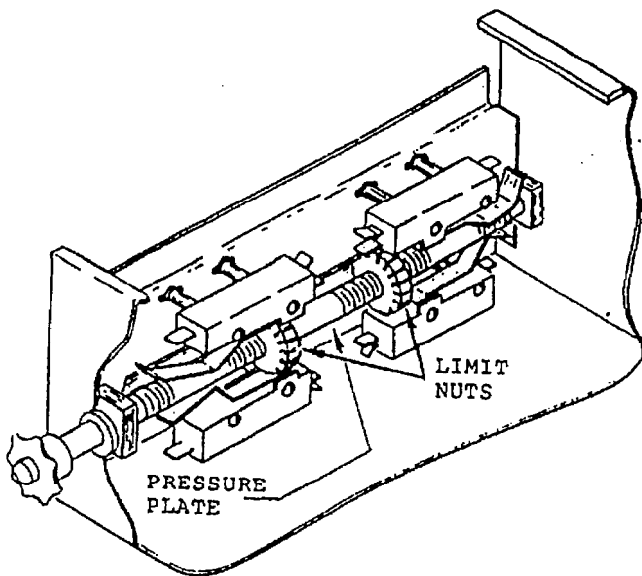
After wiring has been checked and operator is running properly, limit will probably need re-adjusting. (See: Limit Adjustment).

WHERE OPERATORS WITH WIRING TYPES WHICH UTILIZE CONSTANT PRESSURE ON THE "CLOSE" BUTTON ARE USED, THE CONTROL STATION MUST BE LOCATED SO THAT THE OPERATION OF THE DOOR MAY BE OBSERVED BY THE PERSON OPERATING THE DOOR

CONNECTION OF A SAFETY EDGE DEVICE

A separate 24V electrical circuit is provided for the connection of a safety edge device. Any such device that uses a normally open contact may be connected to terminals # 8 and #9, on the low voltage terminal block. When the safety device is actuated, (when the door comes in contact with a object during downward travel), the circuit will cause the motor to stop and reverse the door to the fully open position. In addition, there is a cut-off limit switch in the circuit that will de-activate the safety device during the last few inches of downward door travel.

LIMIT SWITCH ADJUSTMENT FOR MOTOR OPERATORS



1. BEFORE OPERATING DOOR - SET GROOVED NUTS IN CENTER POSITION BETWEEN LIMIT SWITCHES
2. WHILE RAISING DOOR ELECTRICALLY - DEPRESS LIMIT SWITCH IN THE DIRECTION WHICH THE NUTS ARE TRAVELLING, THIS SHOULD STOP THE TRAVEL OF THE DOOR, IF WIRED CORRECTLY.

NOTE: ON 3Ø MOTORS, IT IS POSSIBLE TO RUN OPERATOR IN THE WRONG DIRECTION, SO THAT LIMITS WILL NOT SHUT OFF. IF THIS OCCURS, INTERCHANGE ANY TWO POWER LINES FEEDING THE OPERATOR, AND REPEAT STEP #2.

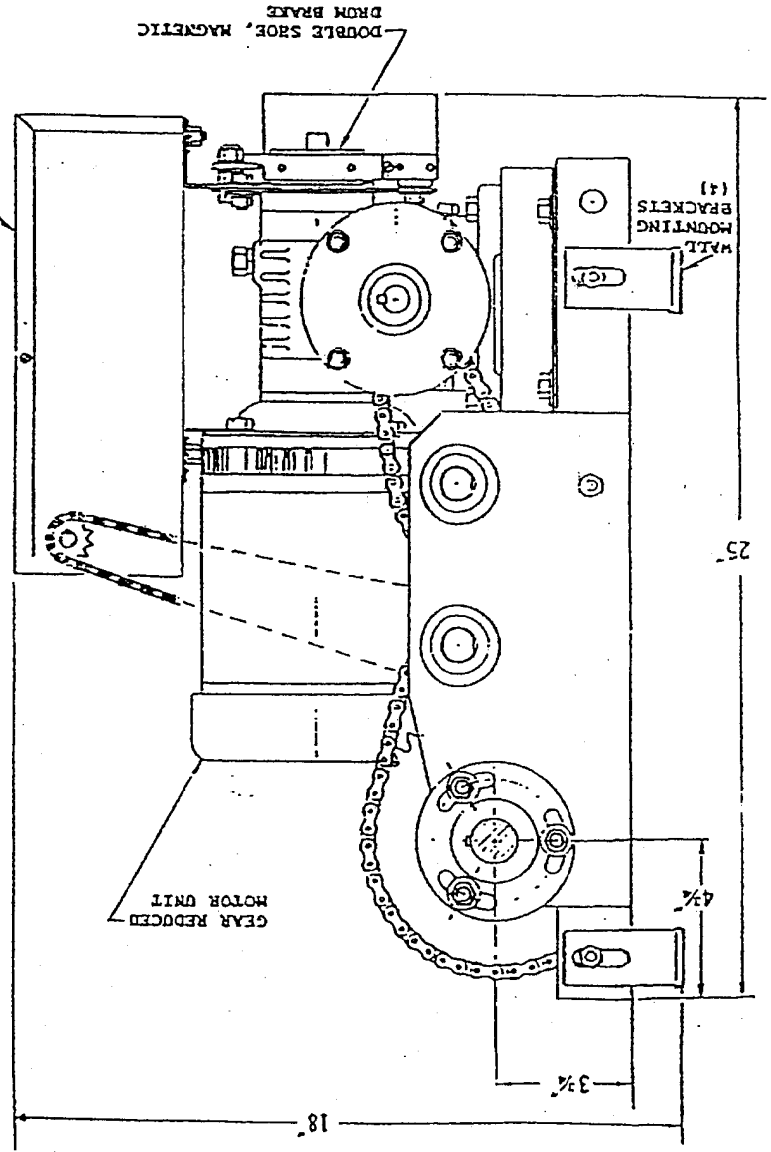
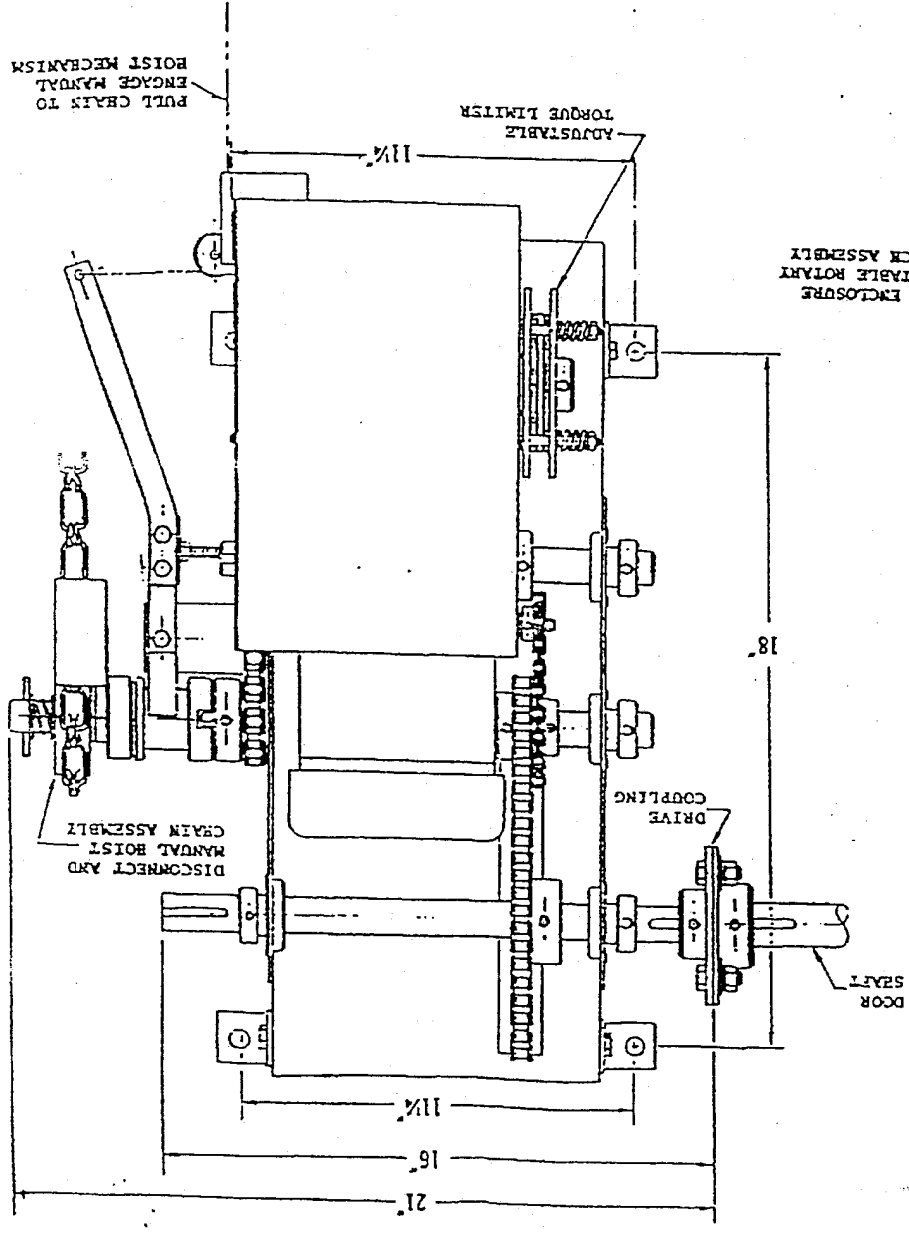
3. DEPRESS PRESSURE PLATE TO MOVE GROOVE NUTS TO DESIRED LOCATION:

TO STOP DOOR EARLIER: MOVE NUT CLOSER TO LIMIT SWITCH PLUNGER

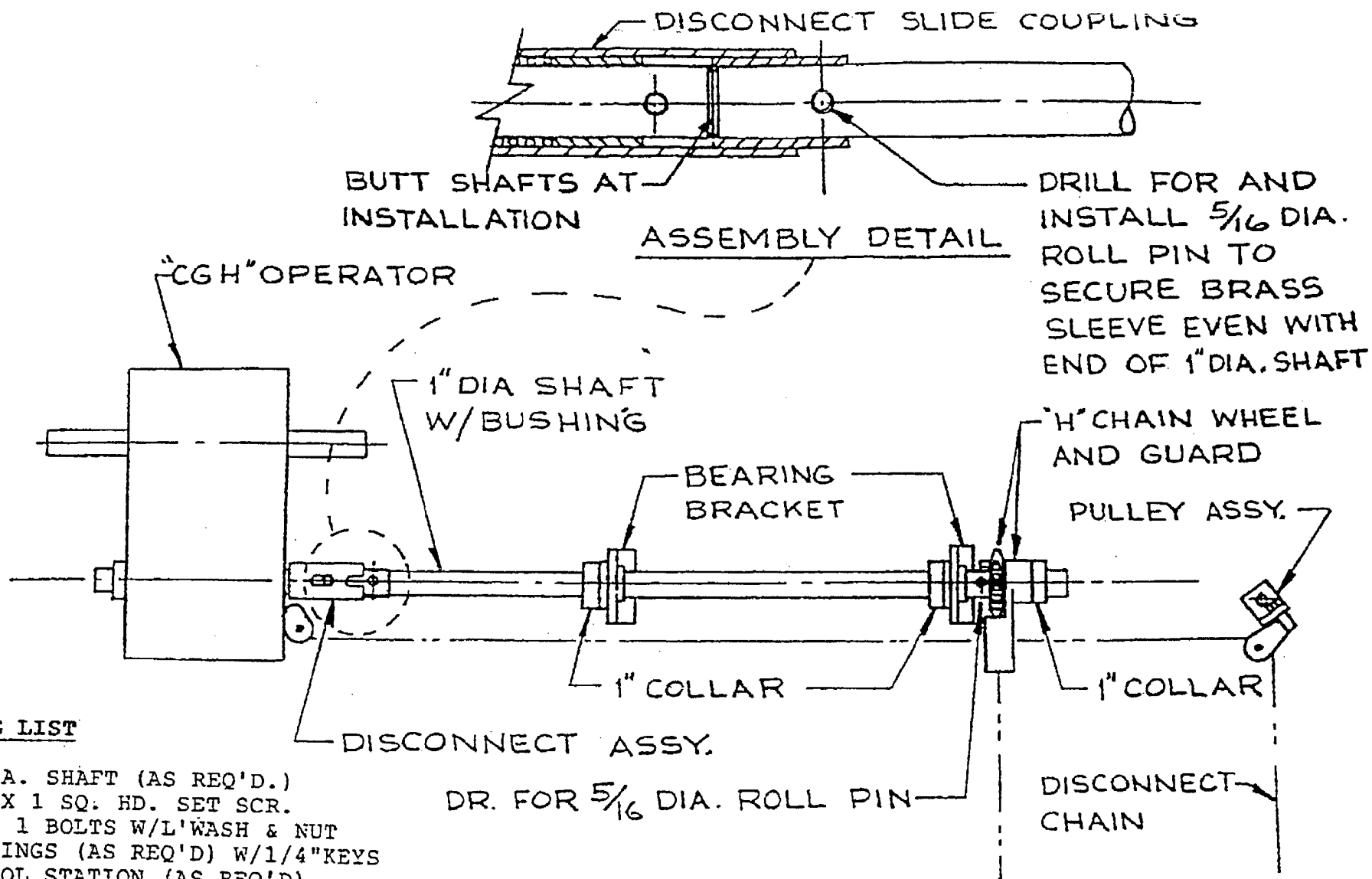
TO STOP DOOR LATER: BACK NUT AWAY FROM LIMIT SWITCH PLUNGER

WHEN MAKING FINE ADJUSTMENTS, TURN NUT ONLY 1/4 TO 1/2 TURN AT A TIME, AND RUN DOOR AGAIN, ELECTRICALLY.

AFTER SETTING NUTS IN DESIRED POSITION, MAKE CERTAIN THAT GROOVE IS ENGAGED BY THE PRESSURE PLATE.



CGH.max



PACKING LIST

- 1" DIA. SHAFT (AS REQ'D.)
- 5/16 X 1 SQ. HD. SET SCR.
- 3/8 X 1 BOLTS W/L'WASH & NUT
- COUPLINGS (AS REQ'D) W/1/4"KEYS
- CONTROL STATION (AS REQ'D)
- INSTALLATION DWG.
- BRASS SLEEVE W/5/16 DIA. ROLL PIN
- "H" CHAIN WHEEL & GUARD
- DISCONNECT CORD W/2' CHAIN & CHAIN LOCK
- 5/16 DIA. X 2-1/2 LG. ROLL PIN
- PULLEY ASSY.
- BEARING BRACKETS
- 1" COLLARS
- HAND CHAIN (AS REQ'D)

HAND CHAIN INSTALLATION
FOR 'CGH' OPERATOR