



## Model "APT" Apartment House Operator

PowerMaster Model "APT" operators are designed for use on Sectional Doors requiring high cycles and quiet operation.  
STANDARD 2 YEAR WARRANTY.



### Architectural Specifications:

**Access Alliance Photo Beams**

Economical  
Protect Openings Up to 18' Wide  
Auto-Detected & Monitored by PowerMaster Solid State Circuit

**PowerMaster Modular Receiver**

Easy Installation –  
Plugs into Control Board  
Standard Three Channel - Open/Close/Stop  
Single Button Control Available  
FC Antenna

Complete Selection of Commercial Transmitters Available

**OSE OPTICAL SENSING EDGE**

Auto-Detected & Monitored by PowerMaster Solid State Circuit Functions when astragal is bent or has slight damage  
Sized to Door in the field  
Quick Installation  
Infrared Technology

VITECTOR

All types of Access Controls available. Call for pricing.

Supply PowerMaster Model "APT" Drawbar Operator(s) RATED 1/2 HP, 115 VOLTS, 1 PHASE, for use on Standard Lift Sectional Doors where high cycles and quiet operation are required. Primary reduction shall be by heavy duty V-Belt Drive. Secondary reduction shall be a chain and sprocket arrangement. Motor shall be 115 VAC Resilient Mount PSC, continuous duty industrial type protected from overload by a current sensing or thermal type overload device.

Electrical components shall be installed in a NEMA 1 enclosure integral to the operator. A transformer shall be provided to reduce control voltage to 24 VAC. Separate terminal strips shall be provided for connection of power supply line and all control devices. Operator shall be wired to accept control stations, safety devices and other access control equipment. Control circuit shall provide instant reverse motor wiring. Positive chain driven, rotary type limit switches shall be provided to limit full open and close travel of door. Limit switch adjustment shall not be affected by removal of motor or by manual operation of door.

An adjustable torque limiting clutch shall be provided to prevent overloading of the operator. A disconnect arm for manual operation of the door shall be provided in case of power failure. The final reduction and drive shall be heavy duty roller chain and sprockets. The drive shaft shall be supported by oilite bearings and be a minimum of 3/4 inch diameter.

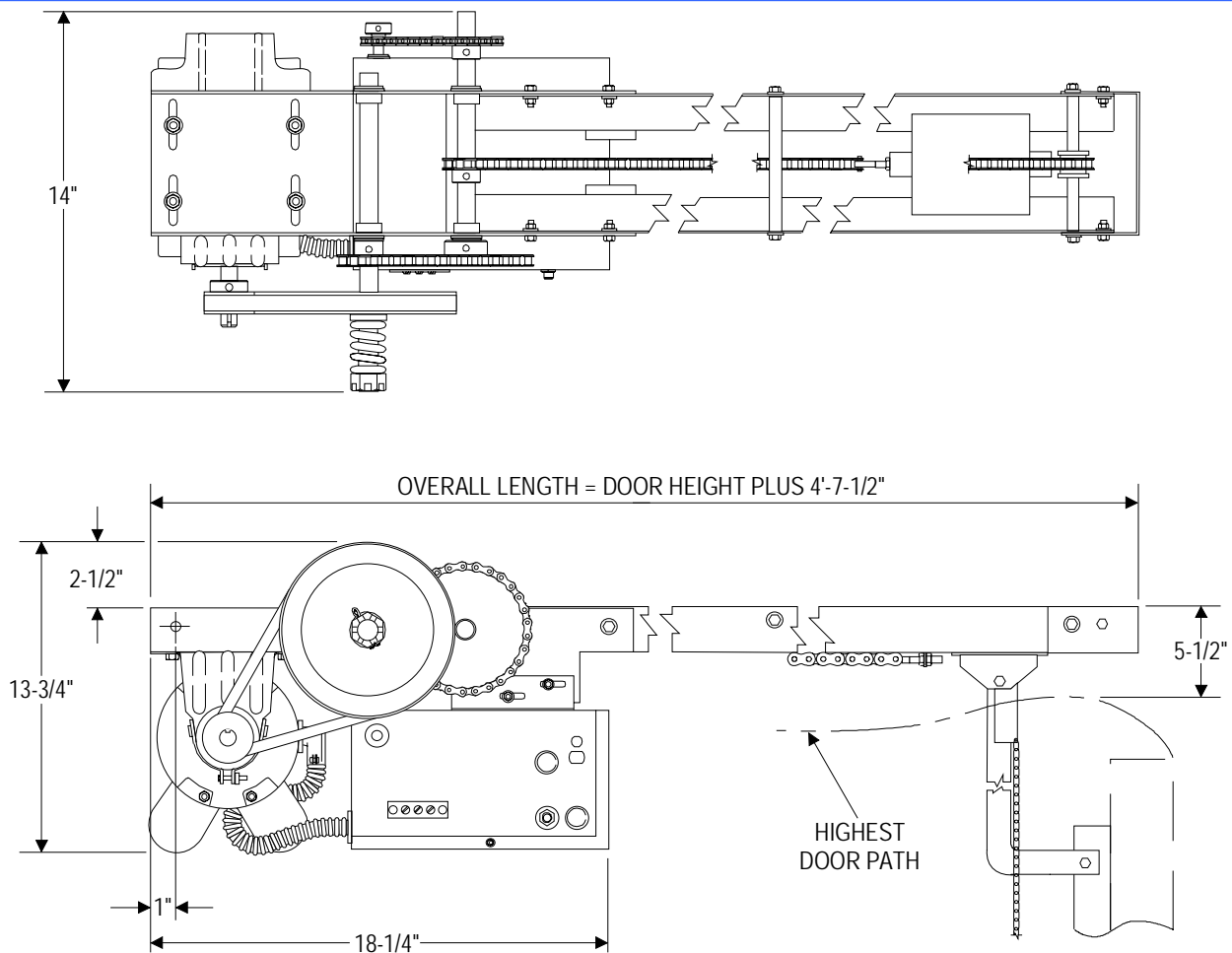
**PowerMaster Garage Door Openers**  
**Proudly Assembled in the USA**

**Electrical Specifications:**

- 115 VAC Resilient Mount PSC Motor with Full Overload Protection
- Solid State Circuitry with Power and Program Feedback LED's
- On Board Open/Close/Stop buttons for service and adjustments
- Terminals labeled and grouped by function
- Auto-Detect monitored photo beam for simplified installation
- Selectable Operating modes B2, C2, D1, E2, T, TS
- Field adjustable built in functions including: timer to close, mid-stop, delay on reverse, lock bar sensing, maximum run time, etc.
- Optional remote mountable warning light module with dual function timer and Red and Green lights

**Mechanical Specifications:**

- For Use on Sectional Doors Requiring High Cycles and Quiet Operation
- Heavy Duty V-Belt and Chain Reduction, Mechanically Self Locking
- Heavy Duty #65 Roller Chain Included
- Adjustable Torque Limiting Clutch
- Positive Chain Driven Rotary Limit Switches
- Drawbar Disconnect (For Manual Operation in case of power failure)
- Baked on Grey Powder Coat finish



**AUTHORIZED DISTRIBUTOR:**