

powermaster

D-SG

Vehicular Slide Gate Operator for Commercial and Industrial Applications

D-SG

STANDARD FEATURES


- BATTERY BACKUP
- 588 WATTS (1/2 HP EQUIVALENT), 24 VDC MOTOR
- NITRO BOARD WITH 4-LINE LCD DISPLAY
- BUILT-IN RADIO RECEIVER
- AC POWER OUTLET
- SOFT START / SOFT STOP
- EASY SET LIMITS
- ACCEPTS PLUG-IN LOOP DETECTORS



*Complete selection of control stations
& accessories are available.*

All gate operators must have contact and non-contact sensing system installed for operator to work properly and safely.

 @PowerMaster

 /PowerMasterOperators

www.PowerMasterNY.com
SERVICING THE INDUSTRY SINCE 1969

SPECIFICATIONS & FEATURES

AVAILABLE IN: 588 WATTS (1/2 HP EQUIVALENT)

POWER OPTIONS: 115V, 1 PHASE

CLASS II LOW VOLTAGE CONTROL CIRCUIT

GATE CAPACITY: 2,000 LBS, 50 FT WIDE, UP TO 60 CYCLES PER HOUR

TRAVEL SPEED: 9 INCHES PER SECOND

FRONT MOUNT CHAIN ATTACHMENT HEIGHT: 16" FROM OPERATOR BASE

HEAVY DUTY #11 GA. STEEL FRAME

40:1, OIL BATH TYPE, GEAR REDUCER

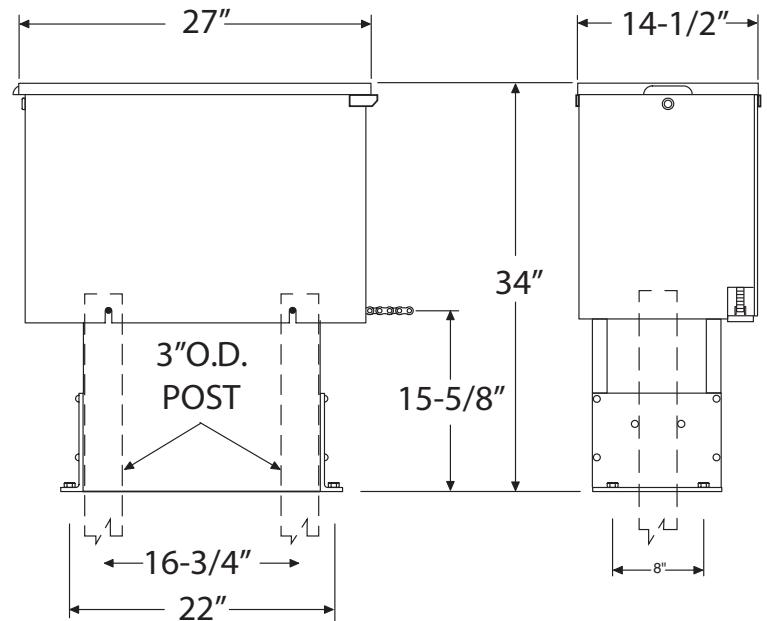
HEAVY DUTY, #50 DRIVE CHAIN WITH A SPRING LOADED TENSIONING SYSTEM

POST OR PAD MOUNTABLE

PADLOCKABLE DRIVE DISCONNECT WITH BRASS SLIDE FOR MANUAL OPERATION IN CASE OF POWER FAILURE

UL 325 LISTED FOR USE IN CLASS I THROUGH IV APPLICATION

SHIPPING WEIGHT: APPROX. 205 LBS



OPTIONAL EQUIPMENT

- ADDITIONAL SAFETY EDGE (CONTACT SAFETY SENSOR)
- ADDITIONAL PHOTO CELL (NON-CONTACT SAFETY SENSOR)
- PUSH BUTTONS WITH KEYED LOCKOUT
- PLUG-IN LOOP DETECTORS
- GEAR BOX HEATER (FOR COLD CLIMATES)
- MAGNETIC GATE LOCK

CAUTION

A moving gate can cause serious injury or death! Carefully read and follow all safety instructions, precautions, and guidelines when installing and using this product. Motorized gates are for vehicles only. Pedestrians must use a separate entrance. **NO ONE SHOULD CROSS THE PATH OF A MOVING GATE!** Proper reversing devices must be installed on gates to avoid all hazards, pinch points and entrapment. Eliminate all hazards, pinch points and entrapment areas. Warning signs must be permanently installed and visible to traffic and pedestrians. Do not mount operating devices accessible through gates or between a gate and wall. Never allow children to lay in the path of a gate. Never allow children to operate or play with the gate controls. Follow UL 325 and ASTM F220-02 standards. Do not install this product unless all hazards, pinch points and entrapment points are protected.

