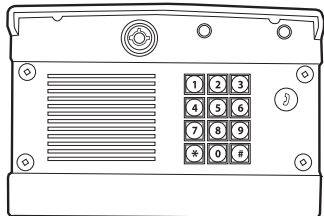


Overview

The Multi-Unit Gate Access Panel (MUGAPLM) uses a digitally secure intercom link that allows it to control up to four gate operators and other accessories. It can be used with up to 63 homes and program up to 120 remote control transmitters. The MUGAPLM is compatible with various Liftmaster Wireless Products.

Carton Inventory



Multi-Unit Gate Access Panel (MUGAPLM)



Key (2)



Bolt (4)



Washer (4)



Nut (4)

Accessory Overview



Telephone Interface Unit (OTIU): The OTIU allows the user to identify which gate or door a visitor is at with Caller ID and a distinctive ring tone. To answer a call press "0". A gate can be opened by dialing "*9" on the telephone keypad.



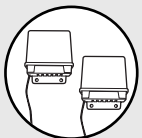
Multi-Unit Telephone Interface (MUOTIU): The MUOTIU acts as a wireless remote autodialer in a dedicated line system.



Portable Intercom: The intercom allows the user to speak with visitors at the MUGAPLM and open the gate by holding the Remote button for 10 seconds.



Flush Mount Intercom: The intercom allows the user to speak with visitors at the MUGAPLM.



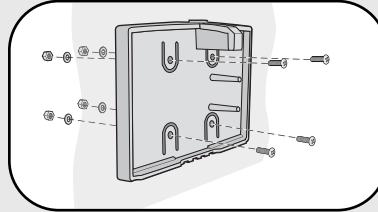
Repeater Set: Repeaters are used to extend the range between the MUGAPLM and other devices. They are recommended for use with buildings with stucco or cement walls.



Remote Control Transmitter: The remote control transmitter will open the gate when the numbered button is held down for 5 seconds within 75' of the MUGAPLM.

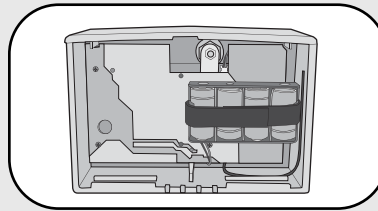
MUGAPLM Installation & Assembly

Step 1



Choose mounting location for MUGAPLM. Remove the back panel and attach it to a solid surface or post.

Step 2



Install 4 C batteries (not provided) in the MUGAPLM and it will beep until the Master PIN Number is entered.

NOTE: To prevent damage to the circuit DO NOT use C size Lithium batteries. If Lithium batteries are needed, switch the C battery pack with the provided AA battery pack.

Step 3

On keypad press:

Step 4

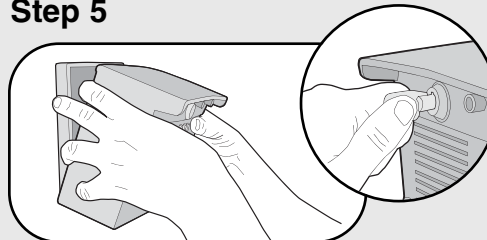
Enter 4 digit Master PIN Number. Example: 1234.



"BEEP" "BEEP"

NOTE: " * " is a cancel button that will cancel any call or key sequence.

Step 5



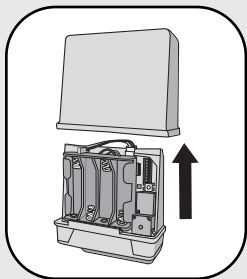
Mount the MUGAPLM onto the back panel. Lock MUGAPLM with key.

NOTE: Do not slam the MUGAPLM against the wall or the temper sensor will activate. If additional MUGAPLM is being used see Operation & Features: Multi-GAP Mode.

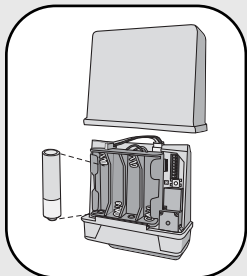
NOTE: If there is already an existing receiver proceed to Pre-Installed LiftMaster Receiver (315Mhz Only) section.

Gate Control Unit (GCU) (not provided)

Assemble



Step 1: Remove GCU cover.

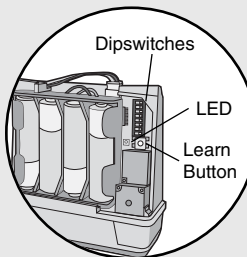


Step 2: Install 4 AA Alkaline batteries (not provided). (Lithium batteries recommended for colder environments.)

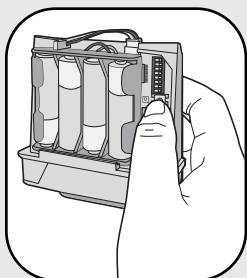
NOTE: This step applies only if more than one GCU is being used.

Step 3: Up to four GCUs can be used. Each GCU will need a different Identity. Set the Identity of the GCU by changing the Dipswitches as shown in the chart below.

GCU ID	Switch #1	Switch #2
1	OFF	OFF
2	ON	OFF
3	OFF	ON
4	ON	ON



Program



Press the Learn button on the GCU for one second. The LED will light for 20 seconds.

Within 20 seconds enter Master PIN Number on MUGAPLM:



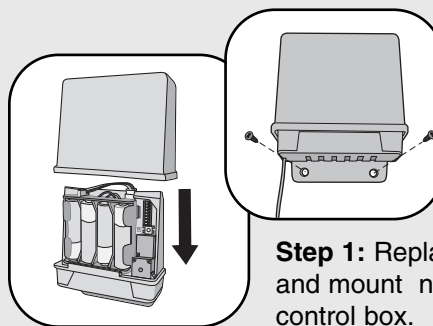
Followed by GCU Identity as determined in Step 3:



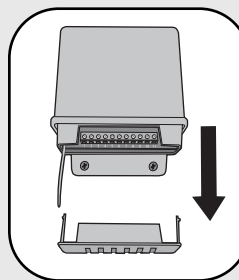
“BEEP” “BEEP”

The GCU LED will blink 3 times indicating programming is successful. **NOTE:** The relay will engage. If error tone is heard or GCU LED emits 3 double blinks, then programming has failed. Repeat for additional GCUs.

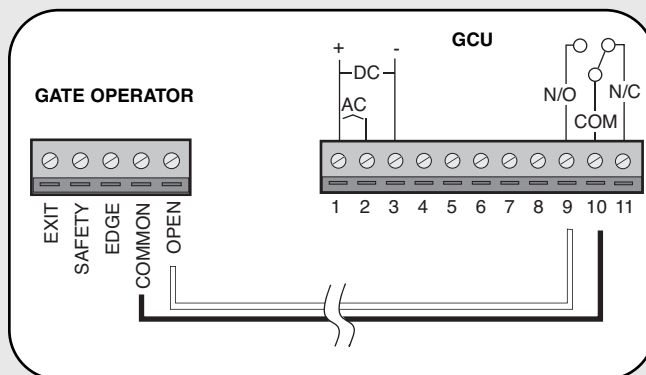
Installation



Step 1: Replace GCU cover and mount near gate operator control box.



Step 2: Remove bottom panel of GCU. Connect Terminal 10 on GCU to Common on gate operator (shown below). Connect Terminal 9 to Cycle on gate operator (shown below).



Pre-Installed Liftmaster Receiver (315Mhz Only)

Program

Step 1: Pry open the front panel of the receiver case with a coin or a screwdriver.

Step 2: Press and release the Learn button on the receiver. The Indicator Light will light for 30 seconds indicating that receiver is in Learn Mode.

Step 3: Within 30 seconds enter Master PIN Number on GAPLM.

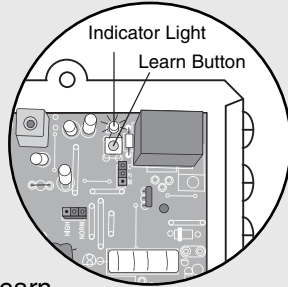
Step 4: Press "1". The Indicator Light on the receiver will blink 3 times indicating programming is successful.

NOTE: An error tone will be heard for 3 consecutive activations only. After the third activation the MUGAPLM assumes that the GCU has been replaced with the receiver.

Repeat Steps 2-4 for each remote, or control device that will be used to access the Liftmaster door or gate operator.

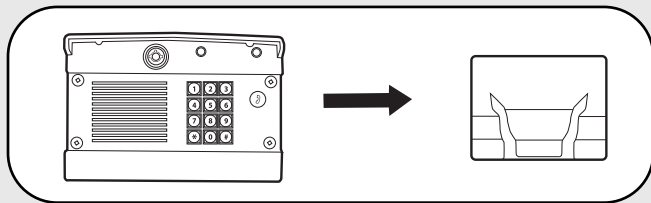
Erase All Control Codes

Press and hold the Learn button on the receiver until the Indicator Light turns off indicating that the receiver memory is clear (about 6 seconds).



Programming Accessories

Indoor Telephone Interface Unit (OTIU)



NOTE: If using the OTIU, each residence that wants to use this feature must each have a OTIU.

Step 1: On the phone connected to the OTIU, press "***07" after hearing the dial tone. Hang up and Learn LED will flash for 15 seconds. If an error tone is heard it means that memory will have to be cleared (Refer to OTIU manual).

Step 2: Within 15 seconds enter Master PIN Number on MUGAPLM.

Step 3: Press "05" and MUGAPLM will beep.

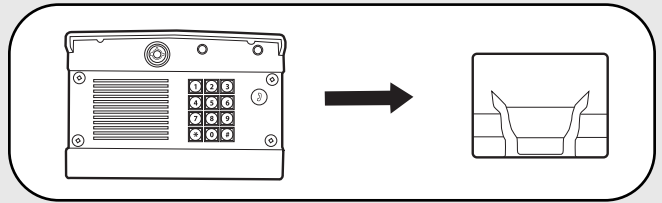
Step 4: Followed by (00-63)

Step 5: Then press the Call Button. The OTIU will ring the telephone and Caller ID will display "Unit Learned".

For complete installation and operating instructions refer to OTIU manual.

Programming Accessories

Indoor Multi-Unit Telephone Interface (MUOTIU)



NOTE: The MUOTIU acts as a wireless remote autodialer in a dedicated line system.

Step 1: On the phone connected to the MUOTIU, press "***07" after hearing the dial tone. Hang up and Learn LED will flash for 15 seconds. If an error tone is heard it means that memory will have to be cleared (Refer to MUOTIU manual).

Step 2: Within 15 seconds enter Master PIN Number on MUGAPLM.

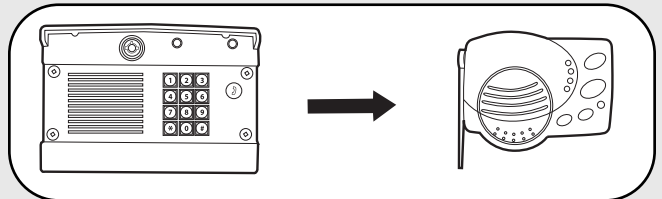
Step 3: Press "05" and MUGAPLM will beep.

Step 4: Followed by (00-63)

Step 5: Then press the Call Button. The MUOTIU will ring the telephone and Caller ID will display "Unit Learned".

For complete installation and operating instructions refer to MUOTIU manual.

Portable Intercom



Step 1: Press and release the Learn button on the intercom.

Step 2: Within 20 seconds enter Master PIN Number on MUGAPLM.

Step 3: Press "05".

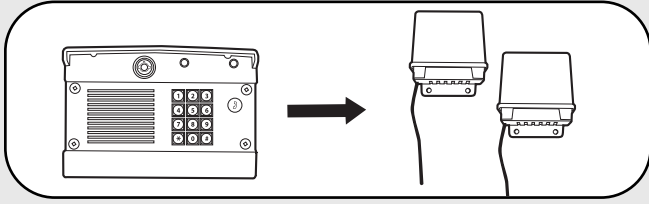
Step 4: Followed by (00-63)

Step 5: Then press the Call Button. Intercom will beep indicating programming is successful.

When the Call button is pressed on the MUGAPLM, the intercom will beep for 40 seconds. During this time, the intercom will ONLY connect to the MUGAPLM. Hold down the Talk button on the intercom to speak to the visitor. Release the Talk button to hear the response. This will be a secure conversation and other intercoms will be locked out. The intercom can also display Gate Status and be put into Conference Mode by changing the Switch Settings.

For complete installation and operating instructions refer to Portable Intercom manual.

Repeater Set



Step 1: On **ONE** repeater, set Dipswitch #1 to ON. All other Dipswitches should remain OFF.

Step 2: Press Learn button on both Repeaters (within 5 seconds of each other). LED will light.

Step 3: Within 20 seconds, enter Master PIN Number on MUGAPLM.

Step 4: Press "05".

Step 5: Followed by (00-63)

Step 6: Then press the Call button. The LEDs on the Repeaters will flash 3 times indicating programming is successful. Allow MUGAPLM 30 seconds to time-out of Learn Mode, or press the "*" to end Learn Mode before proceeding.

Second Repeater Set

Step 1: On **ONE** repeater, set Dipswitch #1 to ON. All other Dipswitches should remain OFF.

Step 2: Press Learn button on both Repeaters (within 5 seconds of each other). LED will light.

Step 3: Press Learn button on **ONE** of the **first** set of Repeaters. LED will light.

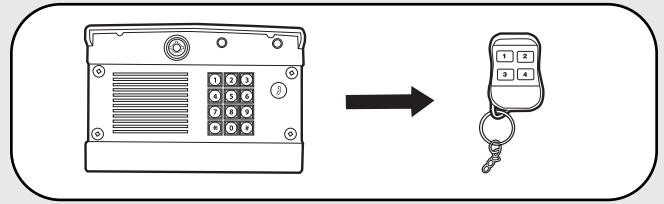
Step 4: The LED's on the second set of Repeaters will flash three times indicating programming is successful.

NOTE: *If adding Repeaters to existing network, all accessories that have been programmed to the MUGAPLM will have to be cleared and reprogrammed.*

The MUGAPLM can work with up to a maximum of 2 sets of Repeaters.

For complete installation and operating instructions refer to Repeater manual.

Remote Control Transmitter



Each numbered button on a remote control transmitter must be programmed separately as each button controls one of four GCU's.

Step 1: Enter Master PIN Number on MUGAPLM.

Step 2: Press "8".

Step 3: Then enter the Gate Control Unit (GCU) Identity (1-4). If there is only one GCU, enter "1". MUGAPLM will beep.

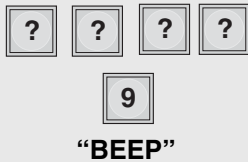
Step 4: Press and hold the remote control transmitter button that is to be used for that GCU. MUGAPLM will beep twice indicating programming is successful.

Operation & Features

Adding PIN Numbers

The MUGAPLM can support up to 99 PIN Numbers.

Enter Master PIN Number on MUGAPLM:



Enter new PIN Number:



If the new PIN Number applies only to a certain GCU, enter the PIN Number followed by the GCU Identity (1-4). The result will be a five digit PIN Number (example: 12341).

Temporary PIN Numbers

A temporary PIN Number can be used only once within a 24 hour period.

Enter Master PIN Number on MUGAPLM:



Enter temporary PIN Number:



If the temporary PIN Number applies only to a certain GCU, enter the PIN Number followed by the GCU Identity (1-4). The result will be a five digit PIN number (example: 12341).

Erasing PIN Numbers

Enter Master PIN Number on MUGAPLM:



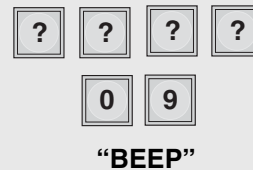
Enter PIN number you want to remove:



A triple beep indicates a PIN Number has been entered that does not exist. The Master PIN Number cannot be deleted.

Change Master PIN Number

Enter Master PIN Number on MUGAPLM:

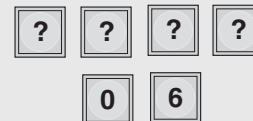


Enter new Master PIN Number:

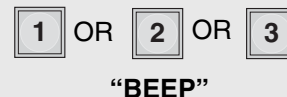


Speaker Volume

Enter Master PIN Number on MUGAPLM:



Enter one of the following volume levels:



Microphone Sensitivity

Enter Master PIN Number on MUGAPLM:



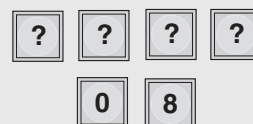
Enter one of the following sensitivity levels:



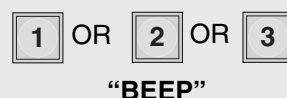
Keypad Brightness

When it is dark, the panel will light when it detects movement (up to 5') or when a button is pressed (This feature is disabled in Power-save Mode).

Enter Master PIN Number on MUGAPLM:



Enter one of the following brightness levels:



Default setting is 2.

Alternate Channel Selections

The MUGAPLM can be set to one of three channels to prevent range-reducing interference from conflicting radio transmitters. Any accessories programmed to the MUGAPLM will have to have memory cleared and be reprogrammed.

Enter Master PIN Number on MUGAPLM:

[?] [?] [?] [?]
[5] [5]

Enter one of the following channels:

[1] OR [2] OR [3]
"BEEP"

Default setting is Channel 1.

Vacation Mode

The MUGAPLM can be put into a Sleep Mode to conserve power and will only respond when the Master PIN Number is entered into MUGAPLM.

Enter Master PIN Number on MUGAPLM:

[?] [?] [?] [?]
[5] [2]

To exit Vacation Mode:

Enter Master PIN Number on MUGAPLM:

[?] [?] [?] [?]
[5] [3]

Party Mode

To keep gate open during a party or activity so the gate will not have to open with each guest, the MUGAPLM can be programmed to remain open until it is cycled close. When the MUGAPLM is in Party Mode it MUST be connected to an external +12 Volt power supply.

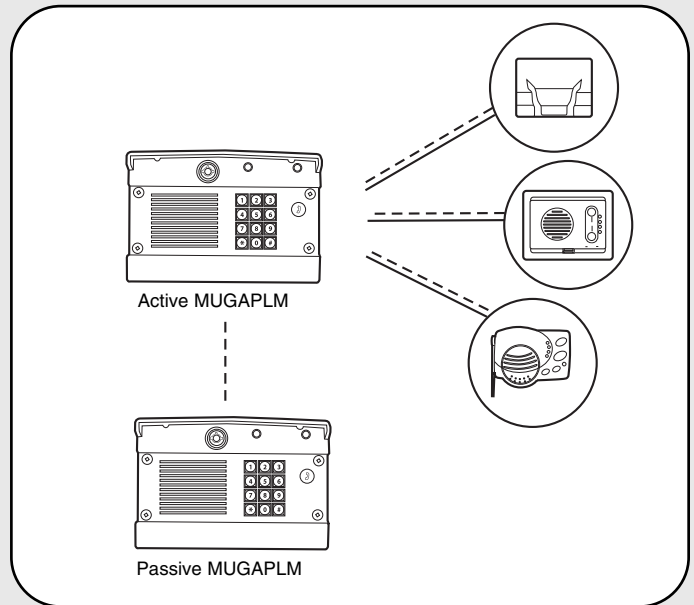
Enter Master PIN Number on MUGAPLM:

[?] [?] [?] [?]
[5] [4]

To close gate and exit Party Mode, cycle the gate by entering a PIN Number or by pressing the button on a remote or intercom.

Multi-GAP Mode

The MUGAPLM can be set to Passive Mode to work with multiple MUGAPLM's. The Passive MUGAPLM will become an accessory to the Active MUGAPLM. Any accessories that have been taught to the Passive MUGAPLM will have to have memories cleared and be reprogrammed to the Active MUGAPLM.



On the MUGAPLM that is to be Active, enter the Master PIN Number:

[?] [?] [?] [?]
[0] [5]

"BEEP"

[0] [1]

"BEEP"

Press:

Within 2 minutes, on the MUGAPLM that is to be Passive, enter the Master PIN Number:

[?] [?] [?] [?]
[5] [6]

"BEEP"

An error code can be heard if programming is unsuccessful and MUGAPLM will return to Active Mode. To exit Passive Mode and return to Active Mode, enter PIN Number, followed by "57".

Multi-GAP Default GCU Setting

The Passive MUGAPLM defaults to activating GCU #2 when it is activated by a PIN Number entered on that keypad, a near-by Remote Control Transmitter, or if the Call button is pressed.

To have the Passive MUGAPLM activate GCU #3:

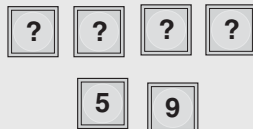
Enter Master PIN Number on Passive MUGAPLM:



“BEEP”

To have the Passive MUGAPLM activate GCU #4:

Enter Master PIN Number on Passive MUGAPLM:



“BEEP”

To Answer or Make Call

To make a call dial the directory code then press the Call button.

To answer a call press “0” on the phone connected to the OTIU or MUOTIU.

Open Gate

To open a gate enter any valid PIN Number on MUGAPLM.

For multiple GCU’s, enter the PIN Number followed by the GCU Identity (1-4).

For a Remote Control Transmitter, hold down the corresponding numbered button for 5 seconds (within 75’ of MUGAPLM).

On intercom, press the Remote button while talking to a visitor. At other times, hold the intercom’s Remote button for 10 seconds, to activate the Primary GCU.

On a OTIU or MUOTIU, dial “*9” on the telephone, while talking to a visitor.

Battery

The AA batteries (not provided) in the GCU will last up to a year and a half depending on use (Lithium batteries recommended for colder environments.) If batteries are low, the intercom will beep three times after it is activated.

The C batteries (not provided) in the MUGAPLM will last up to a year and a half with all functions enabled. Not activating remote control transmitters and enabling the Power-save Mode can extend battery life up to five years.

NOTE: To prevent damage to the circuit DO NOT use C size Lithium batteries. If Lithium batteries are needed, switch the C battery pack with the provided AA battery pack.

PIN Number Functions

PIN number	Function
01	Self Test Mode
03	Power-save Mode
04	Exit Power-save Mode
05 01 Call	Enable MUGAPLM Learn Mode
06 (1-3)	MUGAPLM Volume Control
07 (1-3)	MUGAPLM Microphone Sensitivity
7 ### PIN	Removing PIN Numbers
08 (1-3)	MUGAPLM Brightness Control
8 (1-4)	Activating a Remote Control
Remote (1-4)	Transmitter
09 ### PIN	Change the Master PIN Number
9 PIN	Add PIN Numbers
9 PIN (1-4)	Add PIN Numbers with GCU restrict
51 PIN	Add Temporary PIN Number
51 PIN (1-4)	Add Temporary PIN Number with GCU restrict
52	Vacation Mode
53	Exit Vacation Mode
54	Party Mode
55 (1-3)	Alternate Channel Set
56	Place MUGAPLM in Multi-GAP Passive Mode
57	Place MUGAPLM back to Active Mode
58	Default GCU #3 to the Passive MUGAPLM
59	Default GCU #4 to the Passive MUGAPLM

Troubleshooting

The MUGAPLM will not program a PIN Number.

The PIN Number is the same number as the factory's reset code. Choose another number.

Intercom cannot be programmed.

The MUGAPLM has an automatic "Lock-Out" feature. Enter the Master PIN Number followed by "05" then the residence number (00-63) to enter Learn Mode for one minute. Within 20 seconds, hold down both buttons on a Flush Mount Intercom or the Learn Button on an Access Portable Intercom for 1 second. You should hear a beep within 10 seconds as Intercom learns network code. After hearing double beep, press the Call Button on MUGAPLM to ensure intercoms have been programmed.

GCU does not function.

Ensure GCU has been programmed to the MUGAPLM (see *GCU: Program*). If MUGAPLM beeps 4 times it means the GCU was not programmed to the MUGAPLM. If GCU has Identity of 2, 3, or 4 make sure the corresponding Identity is set with Dipswitches 1 and 2 in GCU (see *GCU Installation*).

Manufacturer's Reset Code is needed to reset MUGAPLM.

The MUGAPLM's serial number is printed on the inside of the MUGAPLM's back panel. Call Technical Support at 1-800-528-2806 for Reset Code. You MUST have MUGAPLM's serial number to receive the Reset Code. The MUGAPLM will clear its memory and can be reprogrammed.

When a call is made, two devices respond.

The two devices were programmed with the same ID number. Both devices will ring until the call is answered by one of the devices and a connection is made.

An error tone is heard when GCU is activated.

The MUGAPLM is not communicating with GCU. The GCU may be out of range or not programmed correctly. If GCU and MUGAPLM function when close together, the GCU may need to be mounted higher off the ground or on a different surface. Metal, trees, or masonry cause interference.

If MUGAPLM and GCU do not function when close together, the GCU has not been programmed to the MUGAPLM. Check the GCU's Identity and reprogram it (see *GCU Assemble and Program*).

There is a buzzing noise or failed connection when used with the OTIU or MUOTIU.

Move the OTIU/MUOTIU away from computer or phone. Changing the channel of OTIU/MUOTIU and MUGAPLM can also solve problem (see *Operation & Features: Alternate Channel Selections*).

When used with OTIU or MUOTIU only first couple of words from caller is heard.

Lower MUGAPLM microphone sensitivity (see *Operation & Features: Microphone Sensitivity*).

System has a very short range.

Interference from a conflicting 900Mhz radio transmitter can affect range. Change the channel of MUGAPLM (see *Operation & Features: Alternate Channel Selections*).

When used in buildings with stucco or cement walls, the range is greatly reduced. Repeaters can be used close to the building to solve this problem.

For Technical support dial our toll free number:

1-800-528-2806

www.liftmaster.com

NOTICE: To comply with FCC and or Industry Canada rules (IC), adjustment or modifications of this receiver and/or transmitter are prohibited, except for changing the code setting or replacing the battery. THERE ARE NO OTHER USER SERVICEABLE PARTS.

Tested to Comply with FCC Standards FOR HOME OR OFFICE USE. Operation is subject to the following two conditions: (1) this device may not cause harmful interference, and (2) this device must accept any interference received, including interference that may cause undesired operation.